



Meet the Teacher

Parent Information Session

Year Group: 2

Meet the Year Group Team



Mrs Dodd

Mrs Oglivy

Mrs Hollingworth/Mrs Finch

Mrs Ramsey

Mrs Hodge

Miss Holmes



Joy Lane Primary School

Community Ethos

Be Ready

Democracy - Taking part in decision making

Be Respectful

Equality - Having the right to be treated the same as everyone else

Equity - Having the right to be treated fairly and equally

Solidarity - Working with others and sharing support

Be Responsible

Self-Help - Showing independence by achieving things on your own

Self-Responsibility - Being responsible for your own actions

Rewards:

Dojo

House Point

Golden Dojo Ticket

Pupil of the Week

Commendation



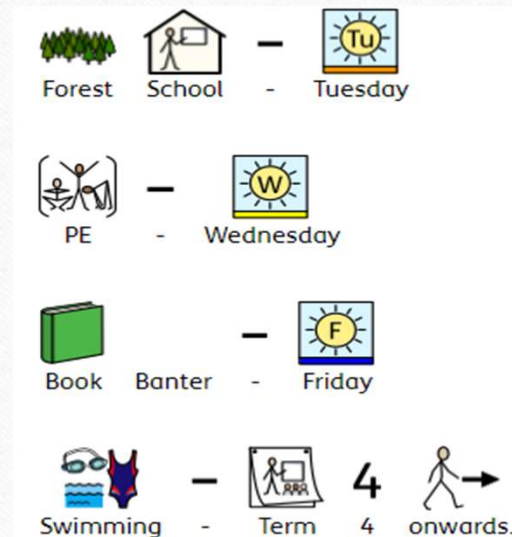
High Expectations in our Class



- We use "The 3 R's" throughout our school day and expect the children to do their utmost to join in with all activities available to them.



Class Routines



Our Behaviour Policy

This follows new published government guidelines, in order to...

- ensure a calm and orderly environment in the school and the classroom with a huge emphasis on the three Rs as this is essential for pupils to be able to learn
- set clear routines and expectations for the behaviour of pupils across all aspects of school life, not just in the classroom
- have a strong focus on attendance and punctuality so that disruption is minimised.



Joy Lane Primary School

Are you ready?

Are you being respectful?

Are you being responsible?

1. Remind
2. Reflect
3. Repair
4. Senior Leadership Team
5. Executive Head



SOOTHED, SAFE, SECURE

Our Non-negotiables

Relentless routines

Daily polite meet and greet

Safe and sensible lining up

Walking to move around the school

Consistent firm language of expectations

Teach and model expectations

Practise and repeat

Consistently praise and notice

Our 'Zen Zone'

- Our behaviour policy has been designed to promote emotional literacy, responsibility and conflict-resolution skills, taking a restorative approach to working proactively with children to provide emotional closure and perspective.
- We seek to increase the opportunities for dialogue at every level including all of the parties involved, and class Zen Zones support these interactions.



**MOMENTS
MATTER,
ATTENDANCE
COUNTS.**

The first Back-to-School weeks are critical moment for setting the trend for the rest of the year.

At school we recognise that parents and carers will be managing poor mental health and wellbeing, special educational needs or chronic illnesses that may make it hard for some children to be in school.



In contrast to the above, reasons for not being in school do not include birthday treats, cheaper holidays or minor illnesses such as a runny nose.

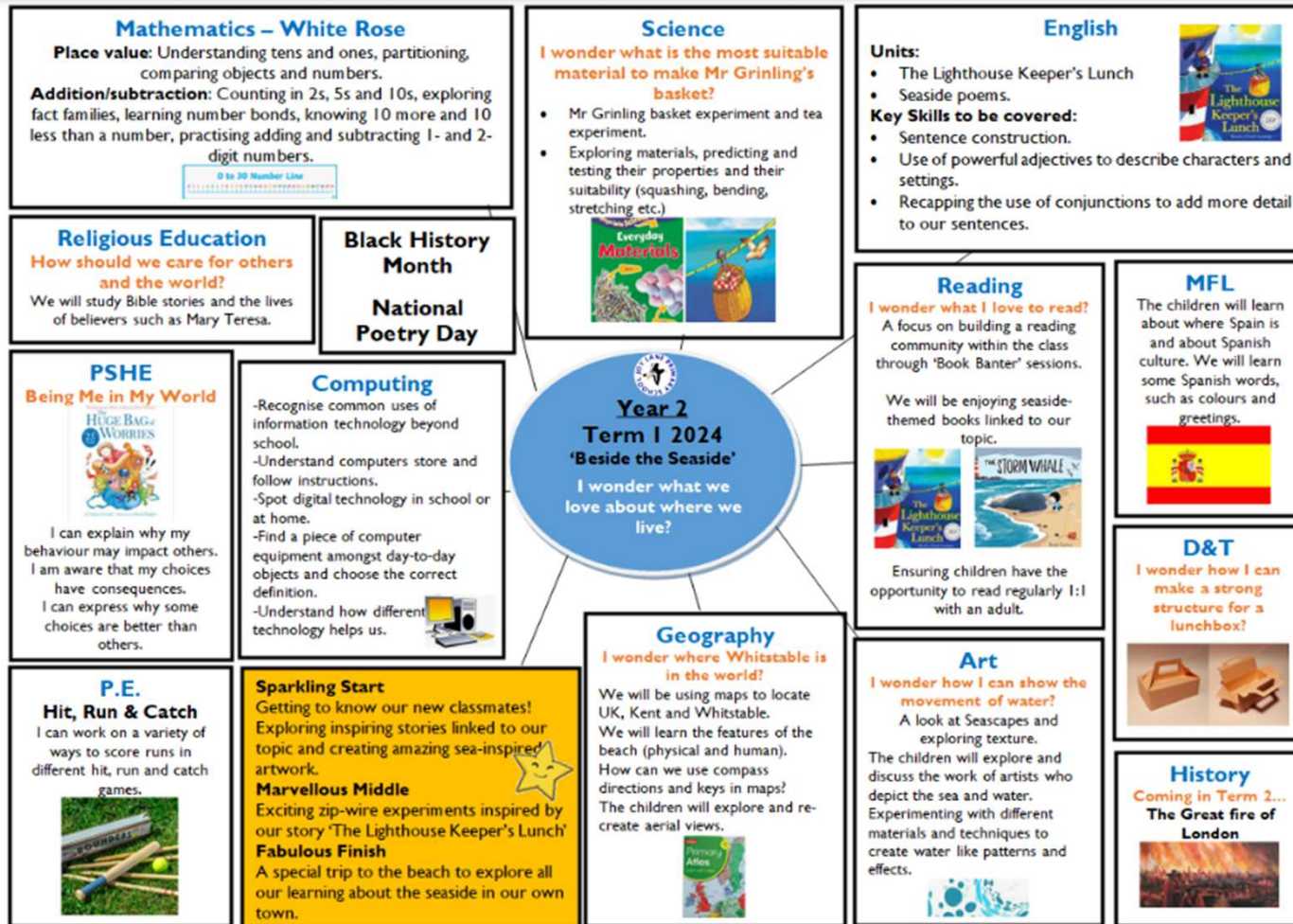


For many years research has informed us that days of lost learning does serious harm to children's learning for example, children who attend school regularly and are not persistently absent achieve better results in their GCSE's.

Persistent absence doesn't just harm the child not in school but affects the dynamics of the classroom.

Children thrive on stability and inconsistent attendance affects every child especially when as a teacher you are trying to cultivate a sense of belonging and community with a new group of children.

The Curriculum



Homework

- At Joy Lane, we aim to develop strong home-school links as we know that we can get the very best from every child when school and homework in partnership.
- This week you will be getting reading books. We will gradually introduce a short maths and writing task on a Friday they can send this in when it is convenient the following week on paper or via dojo.
- We will monitor the children's engagement, offering support to those who find this tricky.

Little Wandle

Children accessing LW will get a new Little Wandle book every week as well as it being assigned as an eBook on Collins eBooks website.

Lexile Reading Books

The children sit a short, termly reading assessment to provide us with a range of information on their reading. A Lexile score is also produced which, alongside teacher judgement, will determine which Lexile book your child takes home.

Bridging Books

Bridging books are used when your child has moved on from Little Wandle books but are not yet ready to move onto a Lexile Book.

Sharing Books

We are passionate about our children having a choice of texts to read for pleasure. They are welcome to choose a sharing book to read alongside their reading book. These books are not organised by difficulty and are there purely for enjoyment!

Times Tables

- In Year 2 we focus on the 2, 5 and 10 times tables and you can support this at home through Times Tables Rockstars.
- **Times Tables Rockstars**

Times Tables Rock Stars:
Play (trockstars.com)

