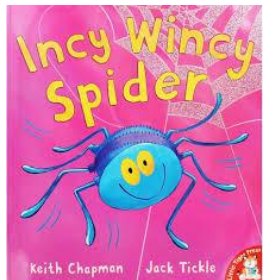
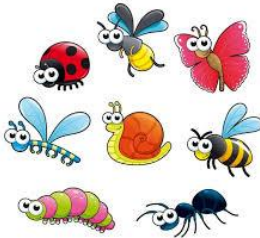
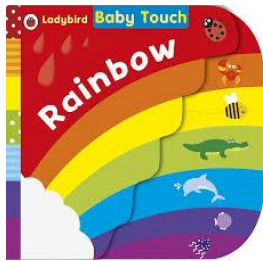


Term 5

Monet: Baby Room

Nature All Around Us



Personal, Social and Emotional Development

- Babies will explore the 'Treasure Basket' with lots of items that link to nature. Babies can choose what to play with and find their 'favourite'.
- Adults will continue to model phrases such as "Can I have a turn?" or "My turn next" to promote turn taking and sharing.

Communication and Language

- Babies will be singing lots of action rhymes such as 'Incy, Wincy Spider' to give babies opportunities to understand new words.
- Babies will be playing with lots of small world animals and soft toys so adults can help children name them and older babies can begin to extend their vocabulary.

Physical Development

- Babies will continue to be encouraged to use the climbing frame and develop their climbing skills, with an adult close by babies will be encouraged to see what they can do independently.
- At meal and snack times, babies will be encouraged to try a range of foods and make their own choices in the foods as they try to eat independently.
- Babies will move their bodies in different ways as we go 'Walking through the Jungle'.

The World Around US

- We will explore different colours of the rainbow.
- We will use our senses to explore flowers and plants through our nature walks and sensory play.
- We will explore different animals and sing songs and rhymes with different animals.

