



Joy Lane Primary School Weekly Newsletter

Friday 1st May 2026

CLASS ORGANISATION - NEW ACADEMIC YEAR

Dear Parents and Carers,

As we begin planning for the next academic year, we would like to share an update on how class organisation will be approached.

This year, we will continue to organise classes in a way that best supports children's learning, academic progress, wellbeing, and social development. Each year group will be reviewed individually, and decisions will be made based on what we believe best meets the needs of the children.

As part of this process, we will also be inviting the children to share who they feel they work well with so that pupil voice can form part of our decision-making. While we may not be able to accommodate every preference, we value the children's perspectives and feel it is important that they are included in the process.

In some cases, this may involve changes to class groupings for certain pupils or groups of children. These decisions will always be made with the children's best interests at the centre and may be intended to support positive learning behaviours, encourage friendships, create balanced class dynamics, or respond to individual needs within a family.

We also recognise that change can be a positive experience for children, offering opportunities to build confidence, develop resilience, and form new friendships; all decisions will be informed by our professional knowledge of the children and the needs of each year group.

Please note that the school reserves the right to make individual decisions where necessary in response to specific circumstances.

We will keep you informed throughout the process and will share class and teacher allocations as soon as they have been finalised.

Thank you, as always, for your continued support and trust.

Kind regards,

Debra Hines
Executive Headteacher

MAY DAY AT WHITSTABLE CASTLE – MONDAY 4TH MAY

Every year on May Bank Holiday, Whitstable and Herne Bay Lions Club hold a Fun Day at Whitstable Castle, attended by large crowds. Expect morris dancing, music, Punch and Judy, 40 different stalls run by charities and local traders, coconut shy, bouncy castle, candy floss and other attractions. Entry is free but they welcome any donations to help the good causes they support.

Check out Livia's (Year 5) winning design on the front cover of the leaflet! Every child at Joy Lane created a poster and these will be displayed around the castle grounds. The posters of the main winners and runners-up can be found in the Lions' information tent – they would be delighted to say hello to any Joy Laners!

Gates open at 11am for all stalls, and the entertainment continues through to the afternoon until 4pm, including the arrival of the Morris dancers at 2:00pm. We hope you are able to attend and show your support!

WHITSTABLE HERNE BAY CANTERBURY LIONS CLUB (CIO)

WHITSTABLE 51st MAY DAY CELEBRATIONS

PICTURE BY LIVIA WISNIEWSKI - JOY LANE PRIMARY SCHOOL

MONDAY 4th MAY 2026
FROM 11.00AM IN THE CASTLE GARDENS
"JACK IN THE GREEN"
PROCESSION FROM HARBOUR STREET 12.30PM
Morris Dancing, Games, Street Festival, Crafts, Punch & Judy
Charity Number 1186630

REMINDER TO BOOK SCHOOL MEALS VIA ARBOR

REMINDER TO PARENTS!

YOU MUST PRE-BOOK SCHOOL DINNERS ON ARBOR!

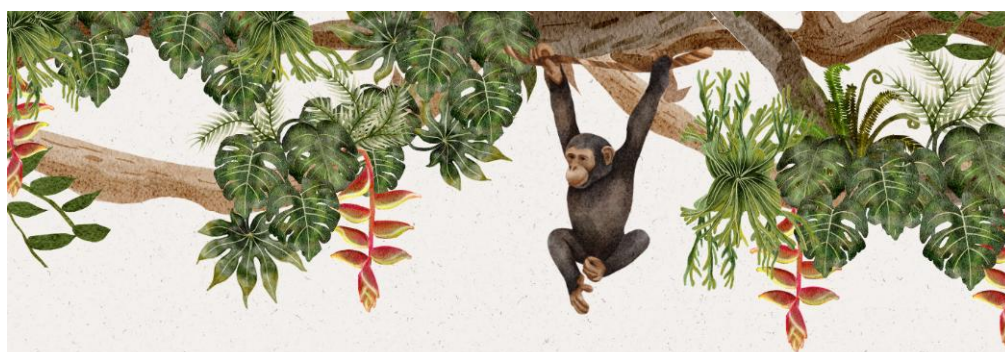
Please Remember to Book Your Child's Meals in Advance

NO BOOKING = NO MEAL!

- No Pre-Booking. No School Dinner!
- Plan Ahead & Book Online
- Use the Arbor App Today!

THE OFFICE WILL CALL AND ASK YOU TO BRING A PACKED LUNCH IF YOU HAVE NOT PREBOOKED

DAVID ATTENBOROUGH DAY – SPECIAL MENU



DAVID ATTENBOROUGH'S BIRTHDAY MENU

Picnic Lunch for David's 100th Birthday

- Cheese or Ham Sandwich
- Raisins
- Crisps
- Juice Carton
- Vanilla Shortbread Animal Biscuit

Note: All dietary requirements will be catered for.

make sure you pre-book your lunch via Arbor



Make sure you pre-book via Arbor: <https://arbor-education.com/>

TERM 5 CURRICULUM WEBS

We are excited to share our learning with you for Term 5 through our year group Curriculum Webs. Here, you will find a snapshot of learning across the curriculum and see how we immerse the children in their learning through a range of hooks and books!

Please click [here](#) to be directed to your child's Curriculum Web.

VOLUNTEER GARDENER NEEDED

VOLUNTEER GARDENER NEEDED!

JOY LANE PRIMARY SCHOOL

Help us grow a **brighter future** for our children and our school community!



WHAT YOU'LL DO:

- Help maintain and improve the school garden and green spaces
- Plant flowers, vegetables, and seasonal plants
- Support occasional gardening activities with pupils
- Share your knowledge and passion for gardening



WHAT WE'RE LOOKING FOR:

- A love of gardening and the outdoors
- Reliability and a positive attitude
- Ability to work independently or with small groups of children
- Gardening experience is helpful but not essential



WHAT YOU'LL GAIN:

- The chance to contribute to a vibrant school community
- Experience working in an educational setting
- The joy of helping children connect with nature

TIME COMMITMENT:

Flexible – even a few hours a week can make a big difference.



IF YOU'RE INTERESTED IN HELPING OUR GARDEN GROW, WE'D LOVE TO HEAR FROM YOU!



CONTACT:

Please get in touch with the school office to find out more and apply.

office@joylane.kent.sch.uk



SPORTS WEEK – CAN YOU HELP?



**SPORTS WEEK
2026**

Can you volunteer some time to teach a sport, exercise or fitness activity?

Are you part of a club or know someone who could help?


From yoga to hockey, dance to karate...
WE NEED YOU!

16th - 19th June

Please complete the Google form attached.

Click [here](#) if you can help.

VOTE FOR BOYCE – BRITAIN'S FUNNIEST CLASS!



I didn't think food could make calls, but then:

BOOM!

ONION RINGS!

BOYce,
Joy Lane primary school



WE'RE FINALISTS OF BRITAIN'S FUNNIEST CLASS 2026

JOY LANE PRIMARY SCHOOL BOYCE

VOTING CLOSSES FRIDAY 15TH MAY 2026

VOTE FOR US AT

BEANO.COM/VOTE T&Cs apply

Voting closes on Friday, 15th May 2026 at 4pm. Only Beano comic subscribers can vote at beano.com/vote.

ATTENDANCE UPDATE



Attendance data week ending 1st May 2026

JLPS Whole School attendance	94.6%
Number of Persistent Absentees (less than 90% attendance)	65 pupils 10.53%

Klee – 97.9%	Kahlo – 95.3%	Kandinsky – 96.7%
Van Gogh – 96.8%	Voysey – 92%	Vallotton – 93.9%
Picasso – 96.2%	Postgate – 93.5%	Potter – 99.2%
Riley – 95.9%	Rousseau – 94.6%	Ringgold – 99.1%
Hockney – 92.6%	Heron – 96.4%	Hepworth – 93%
Degas – 93%	Dali – 93.6%	Da Vinci – 97.4%
Bailey – 96.7%	Banksy – 96.1%	Boyce – 99.3%
Oysters – 91.8%		

FOOD BANK FUNDRAISING

A message from Mike, Signposting Team Leader at Canterbury Food Bank

As Signposting Team Leader at Canterbury Food Bank, I see first-hand how many local families are struggling to afford the basics. Parents skipping meals so their children can eat. People in full-time work who still can't make ends meet. The need across Canterbury, Whitstable, Herne Bay and our surrounding villages is growing—and we're working hard to keep up. That's why on 21st June, I'll be taking on a 12,000 ft skydive to raise money for Canterbury Food Bank. Every donation will help us provide emergency three-day food parcels to people in crisis. For many, this support is the difference between going hungry and getting through a difficult week.



If you're able to support me, please consider sponsoring my skydive. No amount is too small—it all makes a real difference. Please [donate](#) if you can or share this post to help us reach more people.

ROSALIE'S RSPCA FUNDRAISER

Rosalie firmly believes in treating others how you'd want to be treated—and she knows that rule shouldn't stop at humans. She dreams of a world where every single animal has a safe, loving home. To help make this a reality, Rosalie is taking on a 1.5-mile run to raise vital funds for the RSPCA. This is a challenge she has been planning and wanting to do for a long time, and the big day is finally set!

When: Friday, 8th May at 6:00 pm

Please [sponsor](#) Rosalie and give whatever you can to support a charity that is so close to her heart. Every donation makes a huge difference!



PARENT & CARER CHECKLIST

- Next week will be week 1 of the [menu](#).
- A reminder that the school is closed for Bank Holiday Monday 4th May.
- Click here for next year's [Term Dates](#).
- It's David Attenborough Day on Friday 8th May! Don't forget to book your child's lunch on Arbor and prepare a costume for a day of fun!
- Watch this helpful [video](#) for how to book your school meal.
- Why not attend the May Day celebrations at Whitstable Castle on Bank Holiday Monday, 11am-4pm, and look for your child's poster?
- Please click [here](#) to be directed to your child's Curriculum Web.
- Click [here](#) if you can help during our Sports Week!