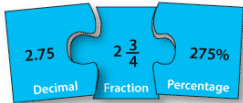


## Mathematics



### White Rose

- Properties of Shape
- Angles
- Perimeter, area and volume

The children will continue to strengthen their **arithmetic** skills, including a focus on the four written methods, fractions and times tables.

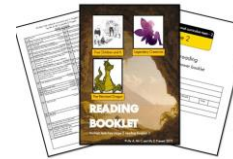
## PSHE Relationships



- What is Mental Health?
- My Mental Health
- Love and loss
- Power and control
- Being online- Real or Fake? Safe or unsafe?
- Using technology responsibly

## Guided Reading

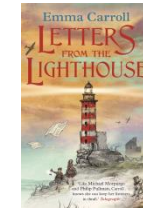
The children have been making excellent progress in their understanding of the texts that they read. In the build-up to SATs, we will use past papers to develop their skills further. However, we will continue to encourage children to participate in our 'Readers' Theatre' each week.



## English

### 'Letters from the Lighthouse' by Emma Carroll

This term, our English will be linked to our WW2 History unit. We will deepen our historical knowledge and empathy for the children who were evacuated during WW2 as we write a diary from the point of view of the main characters.



## Science Life Cycles

Building on our learning in Term One, the children will focus on growth and reproduction in animals, plants and micro-organisms. Children will focus on an animal or plant of their choice and present their knowledge in a range of ways, including diagrams and mini-books.

# Year 6 Term 5



## Art

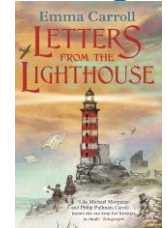
WW2 Artist Study:  
Who was Henry Moore?



Blitz art and Sketching  
Wax Resistance



This term we are reading...



## History



### How was our home town affected in WW2?

If you had grown up in WW2 what signs of war would you have seen locally?

A local study of how WW2 affected Whitstable and the surrounding areas, including a focus on:

- Evacuation
- Rationing
- Battle of Graveney Marsh

### Sparkling Start

We will begin the term reading 'Letters from the Lighthouse', which will be the 'hook' text for Term 4.



### Marvellous Middle

Year 6 will walk to the Sportsman Pub, Seasalter, to investigate the site of the Battle of Graveney.

### Fabulous Finish

End of SATs Party to celebrate the children's achievements.

### P.E. – Rounders

I can throw and catch a ball (of varying sizes) with consistency and accuracy, using one and two hands.  
I can hit a ball (of varying sizes) with consistency and accuracy, using different bats and parts of the body (i.e. hand or foot).

I show a secure knowledge of sportsmanship and explain the importance of teamwork.

I show a secure knowledge of what happens to the body during exercise and explain the benefits that regular exercise has when working towards a healthier lifestyle.

## Music

Music with Mrs Rawlings in preparation for our end-of-year production.

## MFL

### French Café Culture and Restaurants

Children will be designing menus and enjoying role play.