



Joy Lane Primary School Weekly Newsletter

Friday 13th January 2023

CENSUS DAY – THURSDAY 19TH JANUARY 2023

We need your help!

Thursday 19th January 2023 is School Census Day, which is the day when the government take a count of all the children that we have in our school to calculate our funding for the year ahead.

The number of children choosing a school dinner on that day decides a large element of the funding, and as a result, we would like to encourage as many children as possible to opt-in for a school dinner on this day.

We have a special menu for Census Day this year, and we hope to see lots of children enjoying this meal. Please note that Friday's menu will be a 'jacket potato station', with a choice of tasty fillings.

As Reception, Year 1 and Year 2 receive Universal School Meals, you do not need to complete this form as we will assume most children will choose a school meal.

Please indicate whether your KS2 child will be choosing a school meal on this form, which will help our catering team prepare. (This needs to be completed, even if your child is eligible for Free School Meals.)

**Please order and pay by via Arbor by 3pm on Tuesday 17th November.
Thank you for your ongoing support.**

Census Day

Thursday 19th January 2023

Help us by ordering a school dinner!



Chicken Nuggets

OR

Vegetable Fingers

Fries

Beans or Peas

Sugar Ring Doughnut

An alternative dessert will be available for specific dietary requirements



KIC THEATRE – NEXT WEEK!

A reminder that next week KIC Theatre is back to bring the children's learning to life!

Please ensure your child is wearing their PE kit on the day of their class workshop (see below).

Monday 16 th January	Year 6 classes and Degas and Da Vinci classes
Tuesday 17 th January	Year 1 classes and Dali class
Wednesday 18 th January	Year 3 classes & Oysters SRP classes
Thursday 19 th January	Year 2 classes and Kandinsky and Klee classes
Friday 20 th January	Year 4 classes and Kline class

We ask for a voluntary contribution of £2 per pupil to be paid via Arbor (under the Trips tab). Please be aware that we are only able to offer these opportunities if we can cover our costs. Thank you for your continued support.

CULTURE DAY – FRIDAY 27TH JANUARY 2023

On Culture Day, each class in Joy Lane will immerse themselves in the culture of a chosen country, exploring popular food, music, art, school life, and so much more.

To celebrate, we will also be offering an alternative menu, enjoying food choices from around the world!

As Reception, Year 1 and Year 2 receive Universal School Meals, you do not need to complete this form as we will assume most children will choose a school meal.

Please indicate whether your KS2 child will be choosing a school meal on this form, which will help our catering team prepare. (This needs to be completed, even if your child is eligible for Free School Meals.)

We look forward to a fun and inspiring day learning about a world of diverse cultures!

Culture Day

Friday 27th January 2023



Swedish Meatballs

OR

Mexican Vegetable Chilli Taco Shell

Chips

Sweetcorn

Peas

Warm Belgian Waffles with Toffee Sauce

All dietary requirements will be catered for.



SCOOTERS ON THE SCHOOL SITE

Please can you remind your child that they should not ride their scooter/bike on the school site. Please do not be offended if a member of the school team reminds your child.

A BIG THANKYOU!

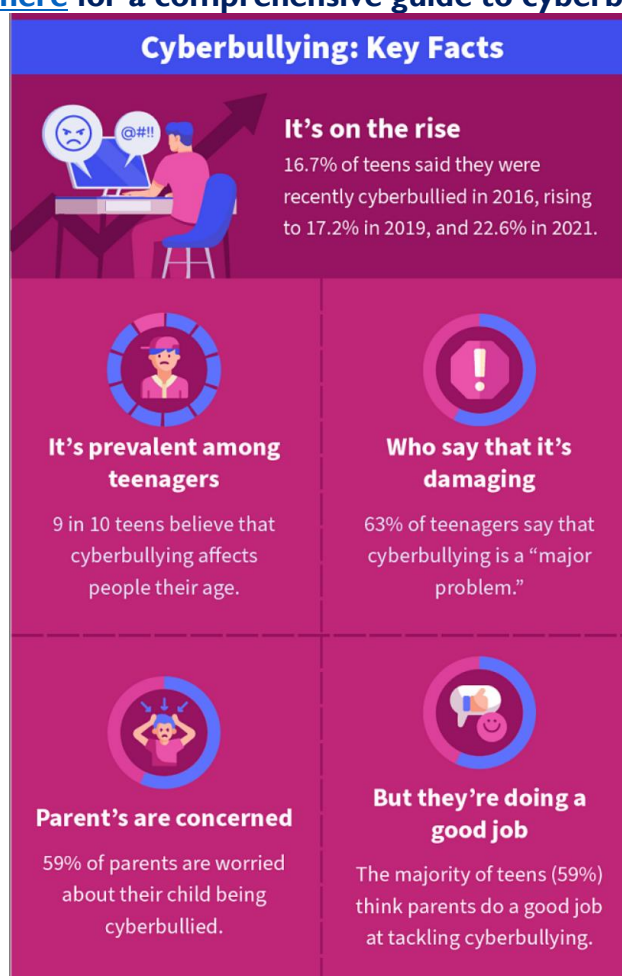


I wanted to express the school's thanks for a recent donation of £350 towards our swimming pool fundraising from Howden's Joinery. This was facilitated by Mrs Southgate and Mrs Banbury who worked together to ensure Joy Lane Swimming Pool was the recipient of this charitable donation. Thank you very much ladies and of course Howdens for the money.

Mr M Ashley-Jones

CYBERBULLYING – A GUIDE FOR PARENTS

Click [here](#) for a comprehensive guide to cyberbullying.



ATTENDANCE

Attendance data week ending 13th January 2023

JLPS Whole School attendance	92.5%
Number of Persistent Absentees (less than 90% attendance)	154 pupils 24.91%



Klee – 87.9%	Kline – 93.5 %	Kandinsky - 90.5%
Van Gogh – 94.3%	Voysey – 93.2%	Vallotton – 93.6%
Picasso – 91.3%	Postgate – 92.2%	Potter – 90.8%
Riley – 94.0%	Rousseau – 94.6%	Renoir – 93.0%
Hockney – 93.6%	Heron – 88.5%	Hepworth – 93.6%
Degas – 92.4 %	Dali – 94.9 %	Da Vinci – 93.5%
Bailey – 90.5 %	Banksy – 94.4%	Barnard – 95.0%
Oysters – 88.7%	School Average - 92.4%	School Target - 98.5%

WARM SPACES AT THE SEASALTER CHRISTIAN CENTRE



Warm Space

A reminder of the 'warm space' being offered at the Seasalter Christian Centre every Monday afternoon in January and February, from 3:15pm to 5:30pm. A warm welcome, low-key activities, conversation and a light hot supper will be provided free for all those who attend. Why not pop in after school? There are things for the children to do and people on hand to help entertain them, so parents/carers can also get a hot drink and have a chat - and it's free!

Open Door Community Hub

The Open Door Community Hub coffee morning from 10-11.30 am on a Thursday is open to any older relatives or folk of any age to come for tea, coffee and homemade cake and savouries - we ask for a donation from those who can, but it's entirely voluntary. Parents/grandparents are welcome to bring little ones to this too.

'Little Salties' Toddler Group

The Toddler Group 'Little Salties' is on every Tuesday 10-11.30am, with snacks and drinks provided.



THE MUSIC DEPARTMENT NEEDS YOU!

Do you have any unused instruments that need a new home? We are particularly looking for keyboards, keyboard stands, ukuleles and guitars. We gratefully welcome any donations at the main school office and promise that they will be loved and used by us.

Our weekly Music assemblies are a chance for the children to not only sing and find out about how Music works, but also for them to experience listening to confident performances by their peers and adults. If you feel you may have a musical talent that you would be willing to share with the children then contact us to discuss how we could incorporate you into one of our future assemblies. Maybe we could even put together a band?

Please don't hesitate to message Mrs Rawlings directly via Dojo if you have any questions, donations or wish to volunteer. Thank you for your wonderful support.

PARENT / CARER CHECKLIST

- Have a school lunch on Census Day (Thursday 19th January) to support our future funding! Book your KS2 child's lunch place [here](#).
- Book your KS2 child's school lunch for Culture Day on Friday 27th January [here](#).
- Consider [applying](#) to be a Parent Governor.
- Next week is Week 1 of the [menu](#).
- Pop along to our Arbor/ClassDojo drop-in sessions, which will be available each Monday morning between 8:40 and 9:15am.
- Can you donate any unwanted games to school?
- Sign your child up for one of our new Extended Learning Clubs via Arbor. See the separate letter sent out alongside this Newsletter.
- For parents/carers of children in Breakfast and After School Club, please remember to check the dedicated Lost Property box in the Upper School Hall entrance for any missing items.

