



Joy Lane Primary School Weekly Newsletter

Friday 14th February 2025

WELCOME BACK ON MONDAY 24TH FEBRUARY

We look forward to welcoming you back to school on Monday 24th February 2025.

EXECUTIVE HEADTEACHER MESSAGE

Dear Parents and Carers,

It has been an incredibly busy term, and the children have continued to make progress in their learning and have exciting learning opportunities on a daily basis; I see the fun and enjoyment of the children when walking around our school. We are able to offer an excellent educational provision where children can flourish and grow, both inside and outside the classroom. It is always a pleasure when the children share their learning with me - it is always the highlight of my day!

This week, we have been focusing on safety online with national Safer Internet Day on Tuesday; the children undertook a range of activities across the week and so please do ask them about what they have been learning.

It has been brought to my attention that a member of our community recently shared a post on a social media platform that included the name of a member of our staff; the school wasn't initially made aware of an issue, but the accusation was still shared publicly. We would like to take this opportunity to remind everyone that if any staff member's name is mentioned on social media, the school may report the matter to the platform's administrators. If the content is perceived as harassment or falls under the category of cybercrime, we will not hesitate to involve the appropriate authorities.

We strongly encourage that any concerns about incidents at school be raised directly with us, so we have the chance to address them before they escalate online. Additionally, when sharing concerns, please ensure that staff members' names (or children's) are not disclosed or made identifiable, as this could lead to legal consequences for those involved.

We appreciate your understanding and cooperation in helping us maintain a positive and respectful community for all.

I do hope that you all have a good mid-term break, whether you are at home or away, and that the sun shines for us all at some. We look forward to seeing you all on our return on Monday 24th February, 2025

With kind regards,

Ms Hines - Executive Headteacher



SWIMMING TERMS 4 – 6

TERM	LESSONS COMMENCE	LESSONS FINISH
4	Monday 24 th February	Friday 4 th April
5	Tuesday 22 nd April	Friday 23 rd May
6	Monday 9 th June	Friday 18 th July

Day	Year / Class	Time
Monday	Year 1 - Van Gogh	1-2pm
	Oysters Group (Group 1 and 2 to alternate swimming each term)	2-3pm
Tuesday	Nursery	9:30-11:30am
	Year 2 – Potter	1-2pm
	Year 2 – Postgate	2-3pm
Wednesday	Year 3 – Ringgold	1-2pm
	Year 3 – Riley	2-3 pm
Thursday	Reception	9:00-12pm
	Year 1 – Voysey	1-2pm
	Year 1 – Vallotton	2-3pm
Friday	Nursery	9:00-12pm
	Year 3 – Rousseau	1-2pm
	Year 2 – Picasso	2-3pm

OPAL PLAY – WE NEED YOU!

If you are having a clear out of the February half-term and have any of the following toys/items you need to re-home, OPAL Play would love to take them off your hands!

- plastic cars & trucks
- animals
- large dolls
- pretend tools
- metal matchbox cars



Please drop them off at the School Office for OPAL Play. Alternatively, you can purchase something from our [OPAL Wishlist](#) if you wish to contribute.



TERM 4 DATES FOR YOUR DIARY

Term 4 Dates



2024-25

Week 1

Monday 24th February
Back to School

W/C Monday 24th February
Year 5 Bikeability (all week)

Week 2

Monday 3rd and Tuesday 4th March
Year 5 Bikeability

Thursday 6th March
World Book Day (Dress up)

Week 3

Friday 14th March - 7-10pm
FoJL Wine and Wisdom

Week 4

Friday 21st March
Year 5 Day Trip to France

Friday 21st March
Red Nose Day (Non-school uniform)

Week 5

Friday 28th March
Extended Learning Clubs Finish

Week 6

Friday 4th April
Last Day of Term

Oysters 1:30pm
Main School 2:00pm
Oyster Bay Nursery 3:30pm
After School Club 4:00pm



KENT POLICE ONLINE SAFETY PRESENTATION

Click [here](#) to view the online safety presentation that Kent Police shared with our Year 6 with an important message for children and parents around keeping safe online.

ATTENDANCE UPDATE



Attendance data week ending 14th February 2025

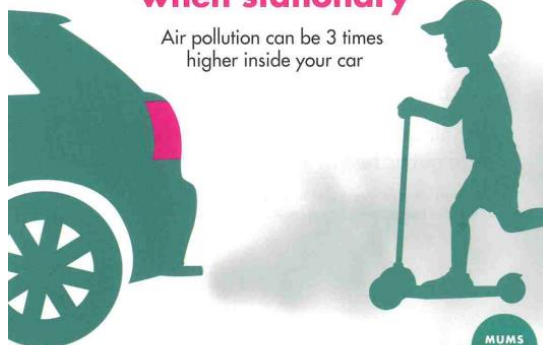
JLPS Whole School attendance	94.2%
Number of Persistent Absentees (less than 90% attendance)	103 pupils 16.74%

Klee – 83.1%	Kahlo – 80%	Kandinsky – 85.2%
Van Gogh – 86.6%	Voysey – 95.3%	Vallotton – 87.3%
Picasso – 74.2%	Postgate – 90%	Potter – 91%
Riley – 97%	Rousseau – 96%	Ringgold – 99%
Hockney – 93.3%	Heron – 92.7%	Hepworth – 94.6%
Degas – 94.7%	Dali – 88.8%	Da Vinci – 94.2%
Bailey – 95.2%	Banksy – 93.3%	Boyce – 90.8%
Oysters – 93.5%		

MUMS FOR LUNGS

VEHICLE EXHAUST IS TOXIC

Please turn off your engine when stationary



Leaving your engine running, or 'idling' wastes fuel and money, and increases the amount of exhaust fumes in the air.

Every minute, an idling car produces enough toxic exhaust emissions to fill 150 balloons.

These toxic emissions, which include particulate matter and nitrogen dioxide, are linked to:

- asthma
- lung disease
- cancer
- dementia
- stroke
- mental health problems
- miscarriage
- low birth weight

'Poor air quality is the biggest environmental risk to public health in the UK.' Public Health England

For more information please search for:
Public Health England Health Matters: Air Pollution



@MumsforLungs



www.mumsforlungs.org



@MumsforLungs



www.mumsforlungs.org



UPDATE FROM WHITSTABLE UNPLUGGED/SMARTPHONE FREE CHILDHOOD CAMPAIGN

Portrait Theatre Presents

GENERATION FOMO

By Isabelle Default

Thursday 27th February 7:30pm
Aphra Theatre - University of Kent
Script in hand performance
£5 suggested donation.

Generation FOMO is a new verbatim play exploring the experiences of young people's use of smartphones and social media and the impact on their mental health.

There will be a post show panel discussion at 8:30pm.

For more information visit [Portrait Theatre](#)

Book tickets on [Eventbrite](#)



FRIENDS OF JOY LANE

WINE & WISDOM

**RAFFLE PRIZE
DONATIONS NEEDED!**



In preparation for the FOJL Wine and Wisdom evening we are looking for donations to hold a raffle at this event.

Do you work for or run your own business that may be able to help?

Your donation could be anything from meal vouchers, spa / beauty treatments, local shop products/ services, something that little bit special that someone would really want to win!

If you are able or know of someone that would be generous enough to support us by donating a raffle prize we would love to hear from you!

WINE & WISDOM



14 March | 7pm
Joy Lane Primary School



**SCAN TO
SIGN UP!**

- Tickets £7 per person
- Teams max size of 8 (no minimum)
- BYO Nibbles and Drink
- Doors open at 7pm (7:30pm start)
- Prizes for the Winners and Losers

Raffle to be drawn on the night!

Lots of amazing prizes to be won!

Follow Friends of Joy Lane PTA on Facebook and Instagram for more details

MATCH FUNDING – CAN YOU HELP?

You will hopefully be aware of the fantastic work our FoJL do to raise funds for our school. We wanted to take this opportunity to remind you about the match funding scheme and how a little bit of your time could raise double the funds for them.

If you work for an organisation that has a match funding policy, any money you raise could be matched by your employer. Companies may match the fundraising total for an event, or for the stall that their employee is working on. Usually, the employee will need to supply them with a letter from the PTA detailing the date and nature of the event, together with the total raised.

We understand that the high street banks, building societies, supermarkets and large corporations are likely to do match funding, but these schemes are not exclusive to the major corporate giants. If you work for an independent company, they may be interested in charitable giving through match funding too.

We would be grateful if you could see if your employer has a match funding scheme, or if they are willing to match fund any of our events. If you can't help out this time, but you know the company you work for has a match funding policy, please let us know. This could be a really large source of income for the PTA and help us raise money for school events and resources. If you are able to help us this way, please email friends@joylane.kent.sch.uk and they can discuss your companies' requirements. Thank you for your support.



KENT FAMILY HUB VISITOR SURVEY



Kent Family Hub Visitor Survey

Kent County Council (KCC) would like to find out about families' experiences of the services available at Family Hubs and/or through Start for Life. Your feedback is essential for us to improve our services moving forward. To take part, please complete our Kent Family Hubs Visitor Survey, by following the link below.

Visit this link.

<https://survey.kent.gov.uk/rhzoip>



Click the picture to visit link.

HOUSE CAPTAIN CATCH-UP

Welcome back to this week's Newsletter. The Tuesday just gone, the Year 6 children went on a coach to a Shakespeare-themed workshop in London with the money we raised by selling cakes and hosting a Wine Gums & Wisdom evening. We also walked along the Thames, where we visited The Globe Theatre; inside the globe we found Shakespeare's name. We went on the two coaches, and we all had a fun time on the way to London!

Another exciting thing that happened this week was Year 4's show for the whole of key stage 2 and parents. It must have been scary, but they did brilliant! In the show, there were three parts, where the classes took it in turns to do their own dancing, singing and playing the ukeleles. Congratulations to everyone!

It is very exciting this week because it is the last week of Term 3, which means it is one term closer to moving up a year group! Thank you for reading our newsletter entry and have a fabulous half term.



PARENT & CARER CHECKLIST

- **We will return on Week 2 of the menu. Our new Spring/Summer Menu will be released in Week 2.**
- **Be part of the School Lottery Super Draw! February Super Draw is now live - one lucky supporter will win a huge Year of Adventures - or of course, a £1,000 cash alternative! You will receive one entry into this draw for each weekly ticket that you have. The more tickets you buy the more entries into the draw you will get!**
- **Having a clear out over half-term? Saucepans and frying pans with handles (lids optional) are urgently needed to replenish the Outdoor play kitchens and the Junk Orchestra.**
- **The new swimming timetable for Terms 4-6 is now available. A gentle reminder to contribute to swimming payments. This video on Arbor shows you how to navigate the app.**
- **Can you buy something from our OPAL Wishlist or re-home your toys (see list in Newsletter) for OPAL play?**
- **Save the Date: Thursday 6th March is World Book Day, and we will be dressing up as our favourite book characters. You may want to begin preparing over the half-term break.**
- **We return to school on Monday 24th February 2025.**
- **Tickets on sale soon for the FoJL Wine and Wisdom evening on Friday 14th March.**

