

Literacy/Phonics

Phase 4 Phonics

Long Vowel Sounds (CVCC, CCVC, CCCVC, CCV & CCVCC words)

Words ending in -s /s/, -s/z/- es

Words ending in -ing and ed

Tricky Words

Review all taught and secure spelling

Comprehension

Know how to read from left to right and top to bottom

Writing

Think of and write a sentence using a tricky word and a connective

Know to use a capital letter and full stop

Postcard writing

Design and write Beach safety Posters

Letter Join (handwriting)

Mathematics - White Rose

Manipulate, Compose and decompose

Sharing and grouping

Visualise, Build and Map

Making Connections

Consolidation

Communication and Language

Children will discuss 'The Odd Fish' and how we can look after our beaches

Children will explore characters through songs and stories

Children will express ideas using past and present tense

EHCP Targets

We will continue to work towards our EHCP targets through 'Learning to Learn Time' and targeted interventions.

Expressive Arts and Design

Children will know the primary colours and explore mixing primary colours

To know that we can use our bodies to create repeating pattern percussion

Physical Development

Development

Gross Motor Skills:

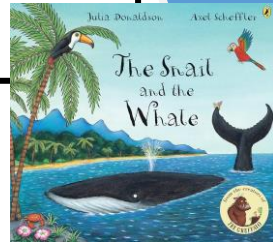
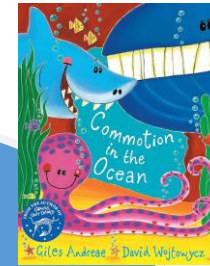
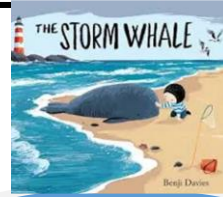
Swimming

Manipulation and Coordination

Sports Day Practice

Fine Motor Skills:

Forming letters using a tripod grip



Wyburn Term 6

'Oh, I do like to be beside
the seaside'

PSED Jigsaw PSHE

Changing me

My Body

Respecting My Body

Growing Up

Fun and Fears (Part One and Two)

Celebration

Road Safety

Understanding the World

Map work: identify key features of our school environment and local town

Children will know how to look after the beaches and the impact on wildlife and the beaches of littering

Children will look at images of seaside holidays from the past and present and identify similarities and differences

Children will know what is meant by floating and sinking and explore a range of materials

Children will identify and name some animals that live under water

Children will identify places that are special to them

Sparkling Start

Shell prints in clay



Marvellous Middle

Making our own sensory bottles

Fabulous Finish

Trip to Whitstable Beach