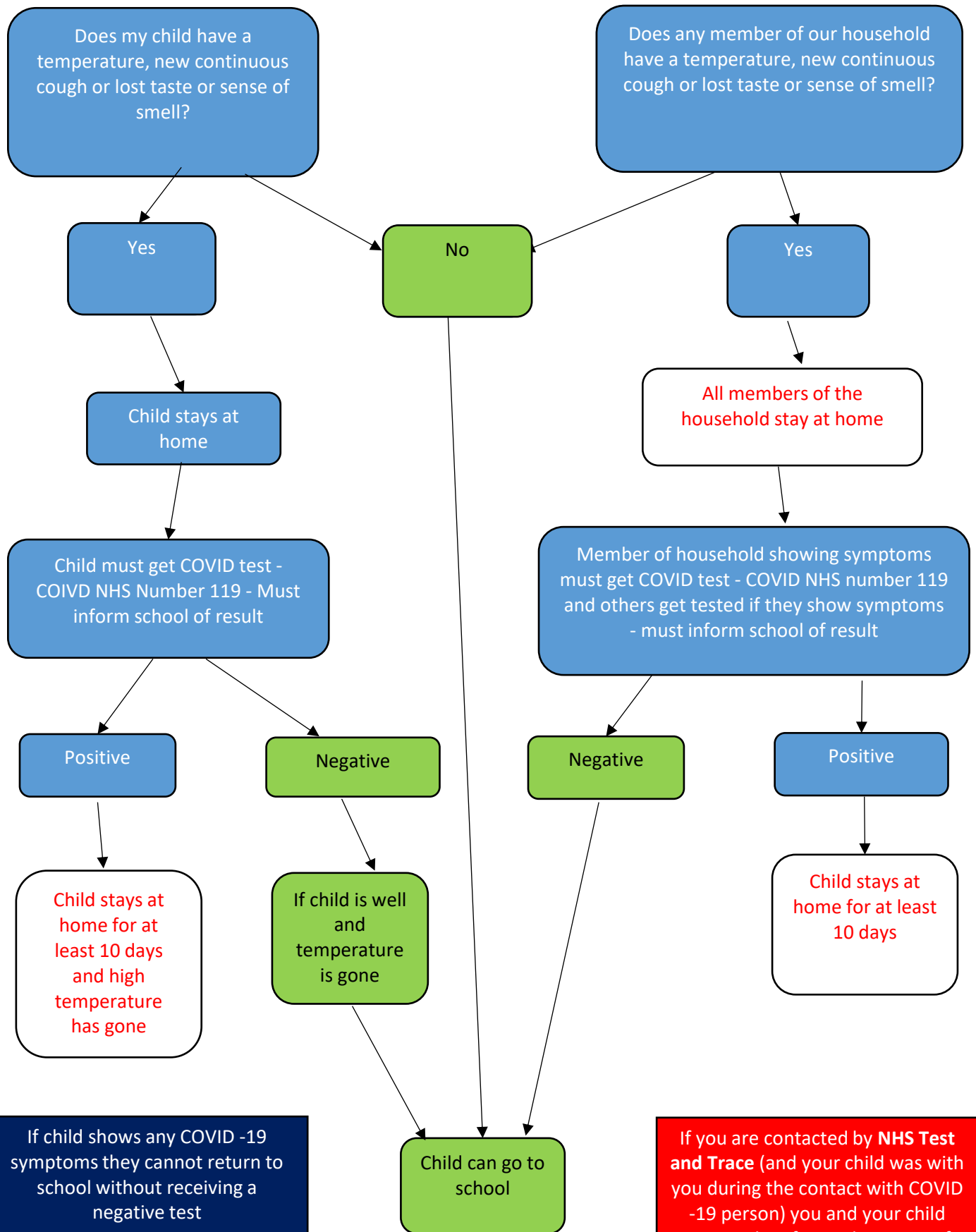




Covid-19 Symptoms at HOME Flow Chart



If child shows any COVID -19 symptoms they cannot return to school without receiving a negative test

If you are contacted by **NHS Test and Trace** (and your child was with you during the contact with COVID -19 person) you and your child must isolate for 14 days, even if either of you receive a negative test.



Covid-19 Symptoms at SCHOOL Flow Chart

Child has a temperature, develops a new continuous cough or loses sense of taste or smell

CHILD

STAFF

Child is removed from room immediately to corridor

Staff member from classroom/year group puts on PPE (visor, apron and gloves)

PPE Staff member and child go to designated quiet area (Conference Room 1) avoiding other pupils and staff

Child stays in quiet area

PPE Staff member takes temperature. Member of staff stays with child

PPE Staff Member inform office staff of temperature and office staff ring parents to request immediate pick up and request parents to organise a COVID test. Parents wait in the lobby

Office staff get siblings and child's personal items

PPE Staff member take child to lobby once parents have arrived and reminds parents to get a COVID test and let the school know the result

PPE Staff member closes quiet room and puts closed sign on door, removes PPE and places in yellow bin, washes hands thoroughly and returns to class

Cleaners clean quiet room wearing PPE and remove closed sign